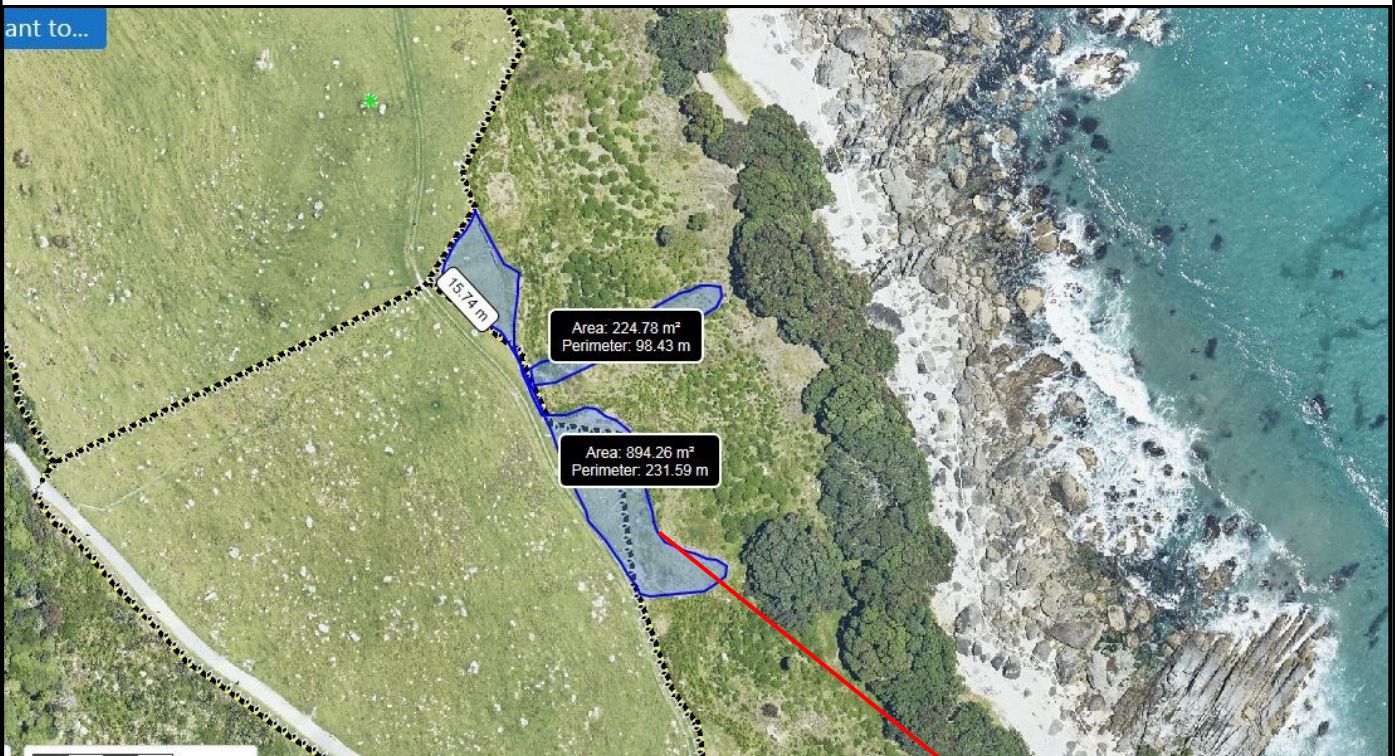


Mauao Planting 2020



Mauao Eastern infill and slip

This area includes a slip that is to be fully planted and also plants to infill the area planted a few years ago and new area created by the fence being realigned. Karo and Karamu are to be planted in the lower half of the site. Lower growing species (Ficinia, Muehlenbeckia and Phormium) are to be planted near the top of the slope, to avoid blocking views. No plants to be closer than one metre to the fence. All plants are to be planted with slow release fertiliser tablets. Shrubs, trees, sedges and flax are to be planted at one metre spacing. Wiwi and Pohuehue are to be planted at 60cm spacing.



Botanical Name	Common Name	E infill
<i>Coprosma repens</i>	Taupata	70
<i>Coprosma robusta</i>	Karamu	50
<i>Ficinia nodosa</i>	Wiwi	100
<i>Muehlenbeckia complexa</i>	Pohuehue	80
<i>Phormium cookianum</i>	Mountain Flax	150
<i>Pittosporum crassifolium</i>	Karo	50
<i>Pseudopanax lessonii</i>	Houpara	70
	Total	500



Mauao Eastern Helipad

This site is a continuation of last years planting. Plants are to be spaced at approximately one metre, to fill the bare area at the top of the bank.

No plants to be closer than one metre to the fence.

All plants are to be planted with slow release fertiliser tablets.



Botanical Name	Common Name	E Heli
<i>Muehlenbeckia com.</i>	Pohuehue	30
<i>Phormium cookianum</i>	Mountain Flax	40
	Total	70

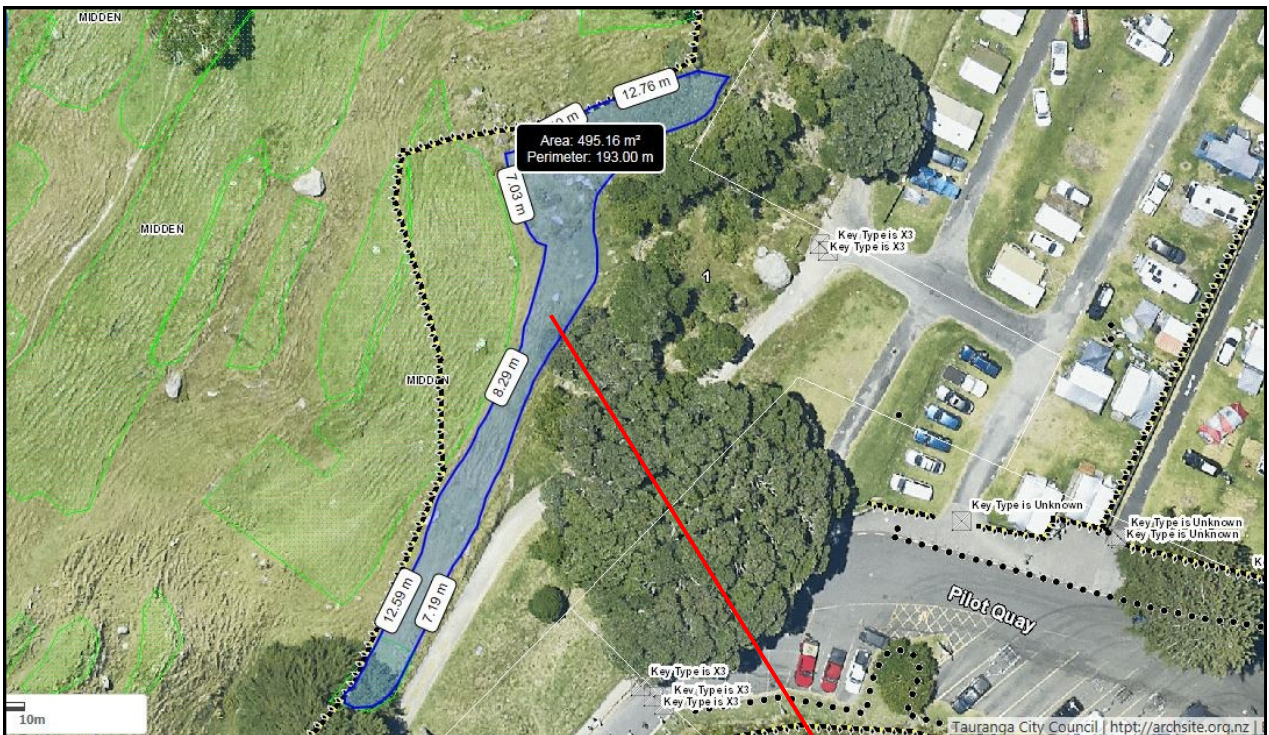


Mauao Spring

This area is already partially planted. Mountain flax and Sedges will be planted to tie in to the surrounding vegetation and conceal the fence.

No plants to be closer than one metre to the fence.

All plants are to be planted with slow release fertiliser tablets. Shrubs, trees, sedges and flax are to be planted at one metre spacing. Wiwi and Pohuehue are to be planted at 60cm spacing.



Botanical Name	Common Name	Spring
<i>Cyperus ustulatus</i>	Giant umbrella sedge	200
<i>Phormium cook.</i>	Mountain Flax	200
	Total	400

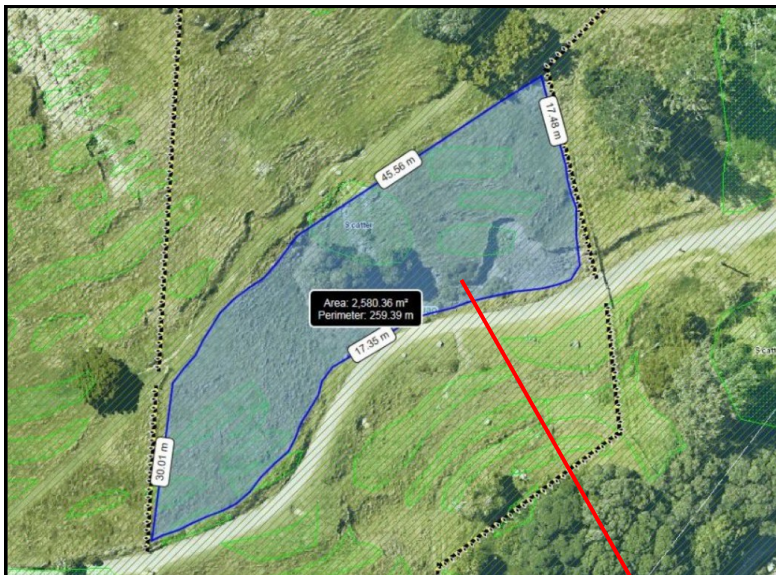


Mauao 4wd track

Plants will be planted on the slip embankments and grass areas outside of archaeological features and to infill erosion scars. Low growing Muehlenbeckia will be planted next to the track edges, to avoid encroachment and blocking of sight lines.

No plants to be closer than one metre to the fence.

All plants are to be planted with slow release fertiliser tablets. Shrubs, trees, sedges and flax are to be planted at one metre spacing. Wiwi and Pohuehue are to be planted at 60cm spacing.



Botanical Name	Common Name	4WD
<i>Cyperus ustulatus</i>	Giant um. sedge	100
<i>Ficinia nodosa</i>	Wiwi	50
<i>Muehlenbeckia c.</i>	Pohuehue	100
<i>Phormium cook.</i>	Mountain Flax	200
	Total	450



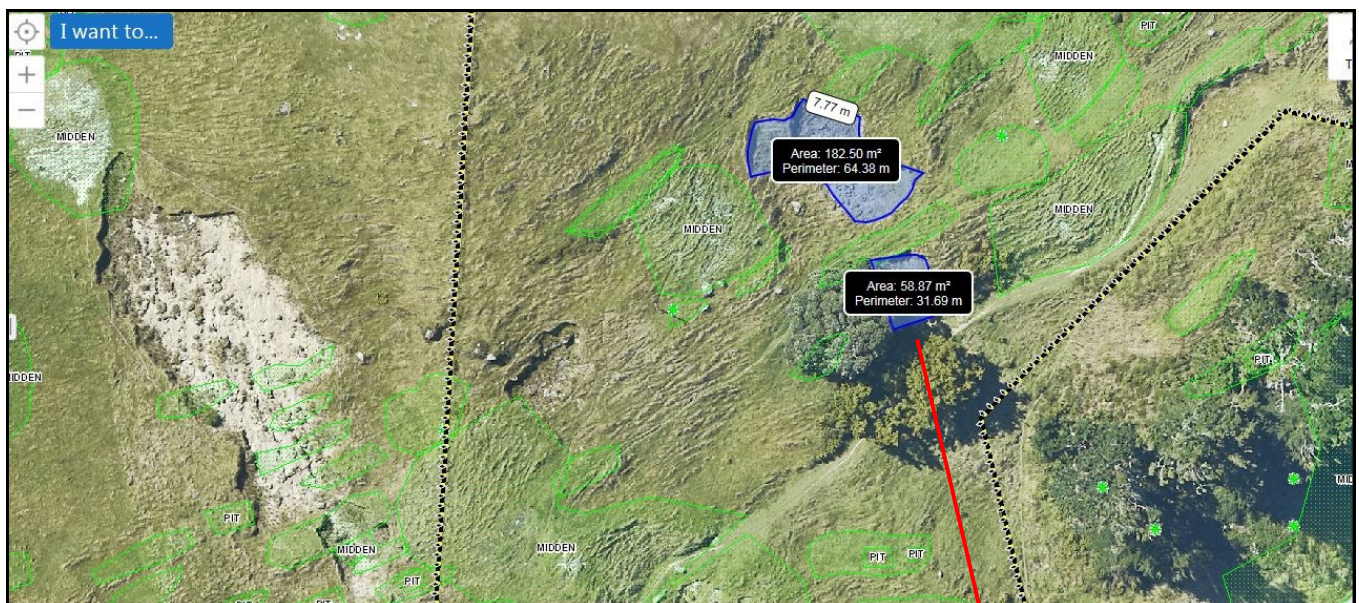
Mauao Slips South

Small slips to be fully planted and fenced with temporary electric fencing to exclude the sheep.

No plants to be closer than one metre to the fence.

All plants are to be planted with slow release fertiliser tablets.

Wiwi and Pohuehue are to be planted at 60cm spacing.



Botanical Name	Common Name	Slips S
<i>Ficinia nodosa</i>	Wiwi	150
<i>Muehlenbeckia com.</i>	Pohuehue	150
	Total	300



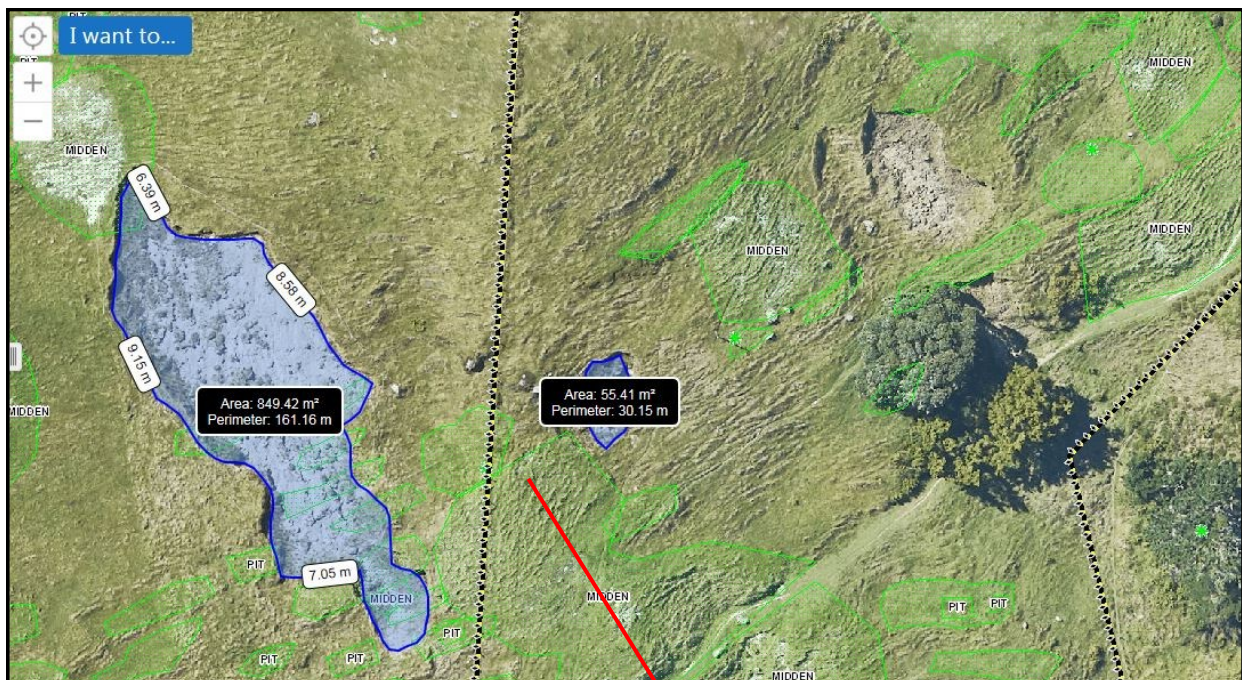
Mauao Slips

These slips have already been planted with Wiwi, this time the *Muehlenbeckia* will be added, amongst the Wiwi, to create a more robust planted area.

No plants to be closer than one metre to the fence.

All plants are to be planted with slow release fertiliser tablets.

Pohuehue are to be planted at 60cm spacing, where possible among existing plants.



Botanical Name	Common Name	Slips
<i>Muehlenbeckia com.</i>	Pohuehue	500
	Total	500



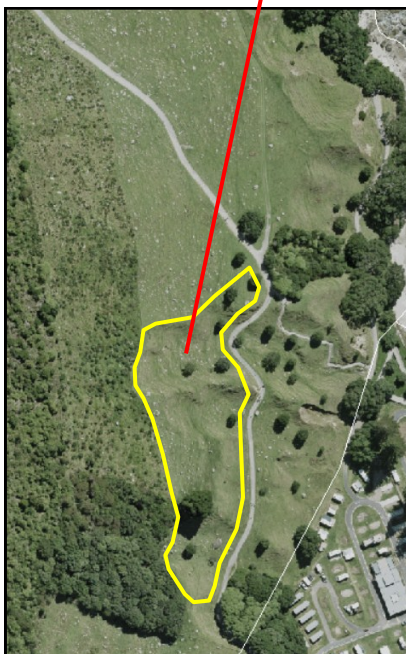
Above Stone Steps South

Puriri are to be spread throughout the site, with at least six metres between individual trees.

No plants to be closer than one metre to the fence. One to five metres inside the fence is to be planted with Wiwi, Flax and Sedges only.

The remaining plants can be randomly located throughout the site.

All plants are to be planted with slow release fertiliser tablets. Shrubs, trees, sedges and flax are to be planted at one metre spacing. Wiwi and Pohuehue are to be planted at 60cm spacing.



Botanical Name	Common Name	S.Step Sth
<i>Coprosma repens</i>	Taupata	600
<i>Coprosma robusta</i>	Karamu	700
<i>Cyperus ustulatus</i>	Giant umbrella sedge	800
<i>Ficinia nodosa</i>	Wiwi	800
<i>Hebe stricta</i>	Koromiko	700
<i>Myoporum laetum</i>	Ngaio	500
<i>Phormium cookianum</i>	Mountain Flax	800
<i>Pittosporum crassifolium</i>	Karo	500
<i>Pseudopanax lessonii</i>	Houpara	250
<i>Vitex lucens</i>	Puriri	75
	Total	5 725

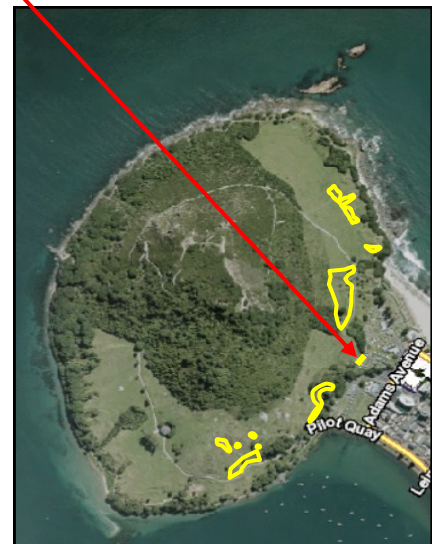
Mauao Central Camp Boundary

No plants to be closer than one metre to the fence.

All plants are to be planted with slow release fertiliser tablets. Sedges and flax are to be planted at one metre spacing. Wiwi and Pohuehue are to be planted at 60cm spacing.



Botanical Name	Common Name	Camp B.
<i>Cyperus ustulatus</i>	Giant umbrella sedge	50
<i>Ficinia nodosa</i>	Wiwi	50
<i>Muehlenbeckia complexa</i>	Pohuehue	50
<i>Phormium cookianum</i>	Mountain Flax	50
	Total	200



Mauao Karaka Plants

Approximately two hundred Karaka seedlings have been removed from Mauao and grown on in the nursery. They are to be returned to Mauao and planted throughout sites that have been planted over the last few years.

Plants are to be spaced at least six metres apart, amongst existing vegetation.

No plants to be closer than five metres from fences and tracks.

Where there are tracks or viewpoints above the planted area Karaka are to be planted in the lower half of the site, to avoid blocking views.

All plants are to be planted with slow release fertiliser tablets.



Mauao Planting 2020

Botanical Name	Common Name	E infill	E Heli	Spring	4WD	Slips S	Slips	Base Tr	Camp B.	Various	S. Steps	M tot
<i>Coprosma repens</i>	Taupata	70					100				600	770
<i>Coprosma robusta</i>	Karamu	50					100				700	850
<i>Corynocarpus laevigatus</i>	Karaka									200		200
<i>Cyperus ustulatus</i>	Giant umbrella sedge			200	100			300	50		800	1450
<i>Ficinia nodosa</i>	Wiwi	100			50	150		300	50		800	1450
<i>Hebe stricta</i>	Koromiko										700	700
<i>Muehlenbeckia complexa</i>	Pohuehue	80	30		100	150	500	100	50			1010
<i>Myoporum laetum</i>	Ngaio										500	500
<i>Phormium cookianum</i>	Mountain Flax	150	40	200	200			100	50		800	1540
<i>Pittosporum crassifolium</i>	Karo	50									500	550
<i>Pseudopanax lessonii</i>	Houpara	70									250	320
<i>Vitex lucens</i>	Puriri										75	75
	Total	500	70	400	450	300	500	1000	200	200	5725	9345

